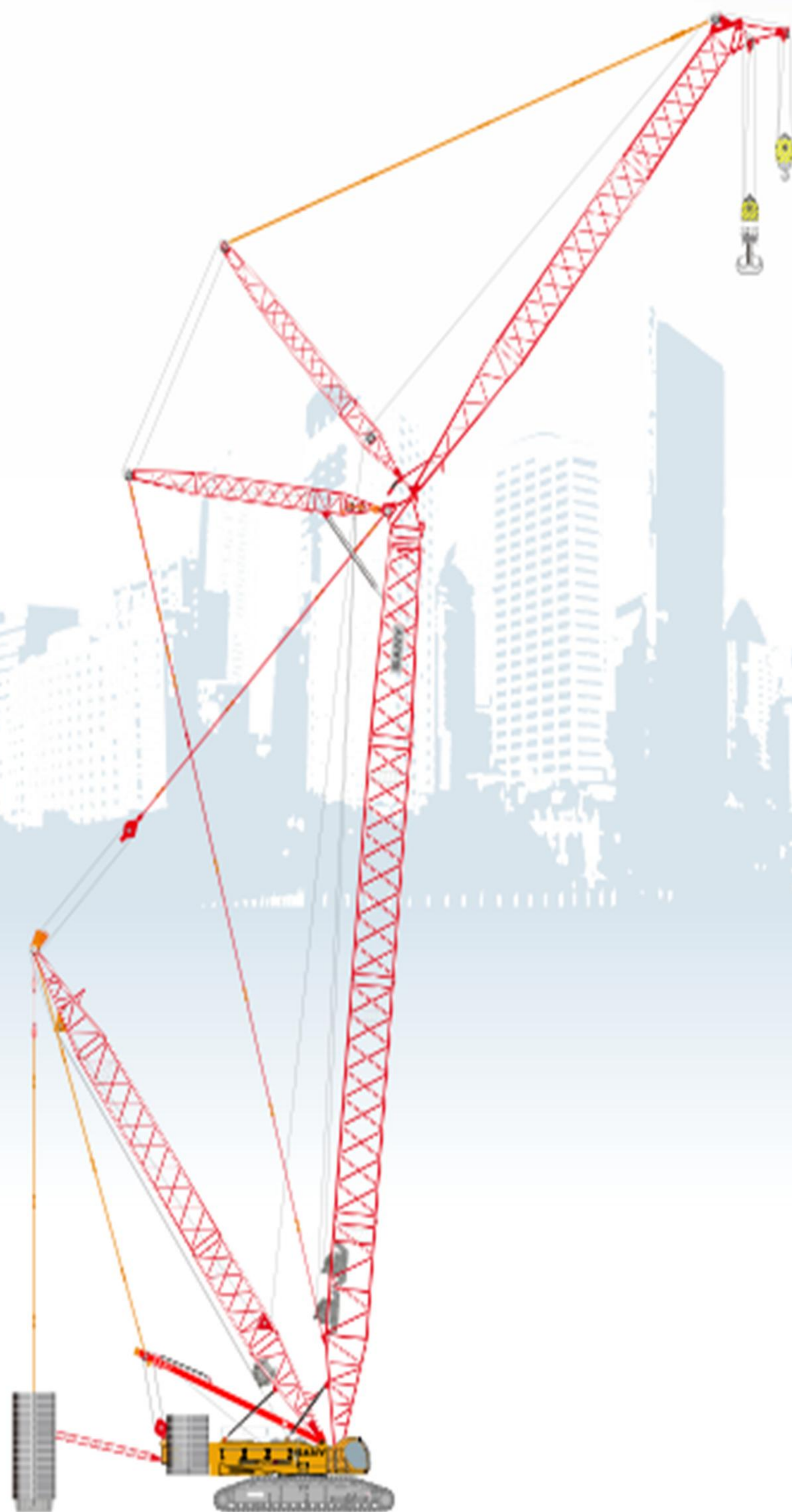




SANY

Quality Changes the World



SANY CRAWLER CRANE **SCC5000A**

Performance parameters

Performance Parameters of SCC5000A Crawler Crane

Performance Index	Unit	Parameter
Max. Rated Lifting Capacity	t	500(6m working radius)
Max. Rated Lifting Capacity (with superlift)	t	500(12m working radius)
Max. Rated Lifting Torque	t·m	3000
Max. Rated Lifting Torque (with superlift)	t·m	6160
Boom Length	m	24~84
Boom Length (with superlift)	m	36~84
Combined boom length	m	48~102
Combined boom length (with superlift)	m	78~126
Luffing jib length	m	24~72
Luffing jib length (with superlift)	m	24~84
fixed short jib length	m	12
Longest boom combination (LJDB operating condition)	m	84+84
Boom luffing angle	°	30~85
Jib luffing angle	°	25~75
Max. single speed of main winch	m/min	0~115
Max. single speed of auxiliary winch	m/min	0~115
Max. boom luffing single speed	m/min	(0~60) ×2
Max. jib luffing single speed	m/min	0~120
Max. superlift luffing single rope speed	m/min	0~126
Slewing speed (without load)	r/min	0~1
Travel speed	km/h	0~1.2 (high speed) / 0~0.35 (low speed)
Gradient capability (with basic boom and with cab faced forwards)	%	30
Rated engine output power	kW/rpm	447/1800
Overall weight (including basic boom, 180t rear counterweight of basic machine, and 40t central counterweight)	t	365
Average ground bearing pressure (including basic boom, 180t rear counterweight of basic machine, and 40t central counterweight)	MPa	0.19
Rear counterweight of basic machine	t	180(without superlift) /140 (with superlift)
Superlift counterweight	t	250
Central counterweight	t	40
Max. transportation dimension of single piece (L x W x H)	mm	13290×3000×3200
Transportation Weight of Single Piece	t	48.8 (not including mast and winch) / 64.6 (including mast and winch)



PT. KONSTRUKSI INDO MACHINERY

Jln. Cakung Industri Selatan 1 No.16 Kawasan Industri Cakung Cilincing - Rorotan - Jakarta Utara - Indonesia 14140

Phone : +62 21 448 52832

Email : info@kim.biz.id

Website : www.kim.biz.id